

IGCSE Biology

Paper 2

Unsolved Topical

Past Papers with Marking Schemes

All Variants

2014-2021

| | |
|-----------------------------|--|
| Title | IGCSE TOPICAL BIOLOGY PAPER 2 |
| Published by | MS Books (042-35774780) |
| Legal Advisor | Ashir Najeeb Khan (Advocate) AKBAR LAW CHAMBERS 39-40, 1 st Floor, Sadiq Plaza, The Mall, Lahore. 0307-4299886, 042-36314839 |
| For Complaints/Order | MS Books 83-B Ghalib Market Gulberg III Lahore info@msbooks.pk (042-35774780, 03334504507, 03334548651) |

PREFACE

Excellence in learning cannot be claimed without application of concepts in a dexterous way. In this regard one of the logical approach is to start in chunks; like chapter wise learning and applying the concept on exam based questions.

This booklet provides an opportunity to candidates to practice topic wise questions from previous years to the latest. Extensive working of Team MS Books has tried to take this booklet to perfection by collaborating with top of the line teachers.

We have added answer key / marks scheme at the end of each topic for the candidate to compare the his/her answer to the best.

MS Books strives to maintain actual spacing between consecutive questions and within options as per CAIE format which gives students a more realistic feel of attempting question.

Review, feedback and contribution in this booklet by various competent teachers of a subject belonging to renowned school chains make it most valuable resource and tool for both teachers and students.

With all belief in strength of this resource material I can confidently claim that it is worth in achieving brilliance.

Our sincere thanks and gratification to **Mr. Muhammad Shahid** who took out special time to help compile and manage this booklet. We would also like to appreciate chemistry faculty for reviewing and indorsing it.

REVIEWED & RECOMMENDED BY

Muhammad Shahid

SLC (Liberty Campus)
0334-4463339

Sadia Khalid

LACAS, SICA
SIPIRT ACADEMY

TABLE OF CONTENTS

| Sr # | Chapters | Pg # |
|-------------|---|-------------|
| 1 | Characteristics and classification of living organisms .. | 7 |
| 2 | Organisation of the organism | 27 |
| 3 | Movement in and out of cells | 46 |
| 4 | Biological molecules | 62 |
| 5 | Enzymes | 71 |
| 6 | Plant Nutrition | 82 |
| 7 | Human Nutrition | 102 |
| 8 | Transport in Plants | 126 |
| 9 | Transport in animals | 150 |
| 10 | Diseases and Immunity | 163 |
| 11 | Gas exchange in Humans | 170 |
| 12 | Respiration | 184 |
| 13 | Excretion in humans | 193 |
| 14 | Coordination and response | 201 |
| 15 | Drugs | 231 |
| 16 | Reproduction | 238 |
| 17 | Inheritance | 266 |
| 18 | Variation and selection | 287 |
| 19 | Organisms and their environment | 298 |
| 20 | Biotechnology and genetic engineering | 324 |
| 21 | Human influences on ecosystem | 336 |

CHARACTERISTICS AND CLASSIFICATION OF LIVING ORGANISMS

M/J/14/12/Q1

- 1 Growth is a characteristic feature of living organisms.

Which process provides the energy for growth?

A excretion **B** movement **C** respiration **D** sensitivity

M/J/14/12/Q2

- 2 The table shows the number of animals collected in a sample from some woodland and the groups to which they belong.

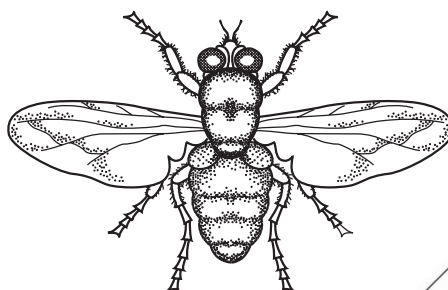
| animal group | number in sample |
|--------------|------------------|
| annelids | 8 |
| arachnids | 10 |
| insects | 80 |
| molluscs | 40 |
| myriapods | 7 |
| nematodes | 15 |

How many arthropods were collected?

A 33 **B** 97 **C** 120 **D** 160

M/J/14/12/Q4

- 3 The diagram shows an animal.

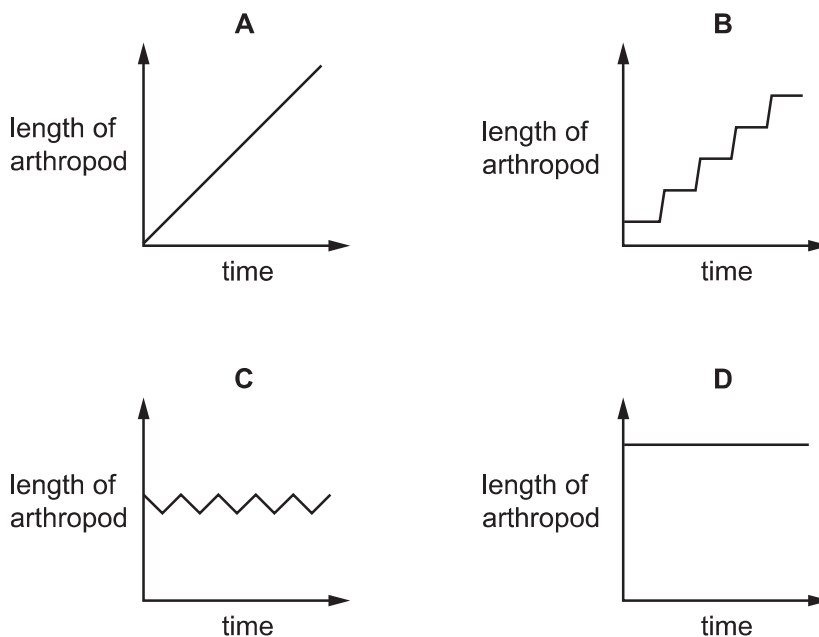


Use the key to identify the animal.

- | | | |
|---|----------------------------------|----------|
| 1 | wings present | go to 2 |
| | wings absent | go to 3 |
| 2 | one pair of wings visible | A |
| | two pairs of wings visible | B |
| 3 | three pairs of legs | C |
| | four pairs of legs | D |

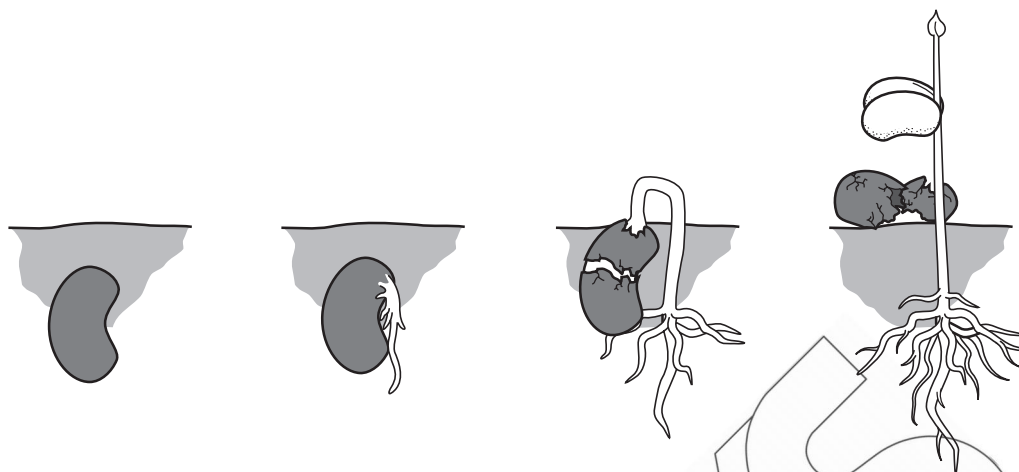
M/J/14/12/Q27 M/J/08/01/Q29

- 4 In arthropods, growth occurs only after the exoskeleton is shed and before the new one hardens. Which graph shows a typical growth curve for an arthropod?



O/N/14/12/Q1 O/N/14/11/Q1

- 5 The diagram shows how a seed changes after it is planted in well-watered soil.

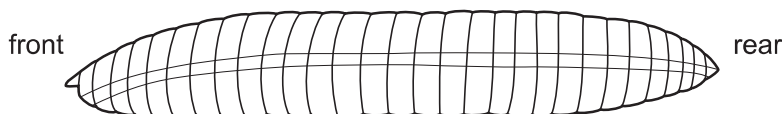


Which characteristics of living things are demonstrated by this sequence?

- A growth and reproduction
- B growth and sensitivity
- C nutrition and reproduction
- D nutrition and sensitivity

O/N/14/12/Q2 O/N/14/11/Q2

- 6** The diagram shows the body plan of an invertebrate animal.



To which group does the animal belong?

- A** annelid **C** insect
B crustacean **D** nematode

O/N/14/12/Q4 O/N/14/11/Q3

- 7** The diagram shows an animal.



Use the key to identify the animal.

- 1 front limbs with five fingers go to 2
front limbs with four fingers go to 3
- 2 skin with spots **A**
skin without spots **B**
- 3 tail with fins **C**
tail without fins **D**

M/J/15/11/Q2

- 8 What is a correct way of naming a species, according to the binomial system?

- A** *Homo sapiens*
- B** *Homo Sapiens*
- C** human being
- D** sapiens

M/J/15/11/Q4

- 9** The key can be used to distinguish between four different chemical substances.

Use the key to identify which substance could be a protein.

- 1 contains the element carbon go to 2
 does not contain carbon **A**
- 2 contains the element nitrogen **B**
 does not contain nitrogen go to 3
- 3 gives a positive result with Benedict's test **C**
 gives a negative result with Benedict's test **D**

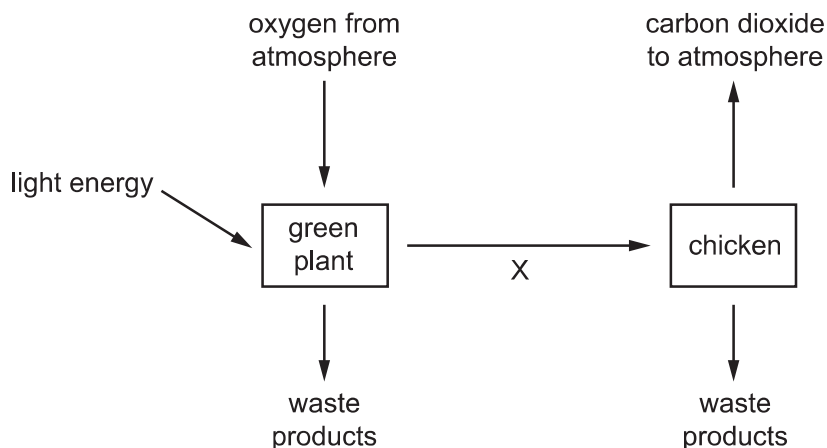
M/J/15/11/Q29

- 10** Development is defined as an increase in

- A** complexity. **C** number of cells.
B dry mass. **D** size.

M/J/15/12/Q1 M/J/15/11/Q1

- 11** The diagram illustrates some of the processes carried out by living organisms.



Which characteristic of living organisms is represented by arrow X?

- A** excretion **B** nutrition **C** respiration **D** sensitivity

M/J/15/12/Q2

- 12** The statements describe four different plants.

Which plant must be a monocotyledon?

- A** The flowers are wind-pollinated.
B The flowers each have five petals.
C The leaves are large with a clear network of veins on them.
D The leaves have parallel veins.

ANSWER KEYS

| Qs # | Key | Qs # | Key | Qs # | Key | Qs # | Key |
|------|-----|------|-----|------|-----|------|-----|
| 1 | C | 21 | A | 41 | C | 61 | D |
| 2 | B | 22 | C | 42 | C | 62 | B |
| 3 | A | 23 | C | 43 | C | 63 | D |
| 4 | B | 24 | B | 44 | D | 64 | C |
| 5 | B | 25 | D | 45 | B | 65 | D |
| 6 | A | 26 | C | 46 | C | 66 | B |
| 7 | C | 27 | B | 47 | B | 67 | D |
| 8 | A | 28 | D | 48 | D | 68 | C |
| 9 | B | 29 | A | 49 | A | | |
| 10 | A | 30 | B | 50 | C | | |
| 11 | B | 31 | D | 51 | D | | |
| 12 | D | 32 | A | 52 | B | | |
| 13 | B | 33 | B | 53 | D | | |
| 14 | C | 34 | C | 54 | A | | |
| 15 | B | 35 | D | 55 | A | | |
| 16 | B | 36 | D | 56 | B | | |
| 17 | B | 37 | B | 57 | B | | |
| 18 | B | 38 | D | 58 | B | | |
| 19 | C | 39 | B | 59 | D | | |
| 20 | D | 40 | B | 60 | B | | |

MS
BOOKS